

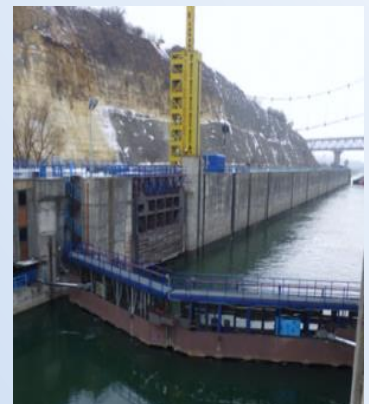
Modernisation of the Danube-Black Sea Channel in Romania



In June 2013 DSD NOELL GmbH together with 4 Romanian companies has been awarded the contract for the modernization of the Danube - Black sea Channel in Romania. The scope of supply of DSD NOELL is the design, fabrication and erection of the main gates for the three twin locks (Cernavoda, Agigea and Ovidiu).

The channel is located in South East part of Romania, and is under operation since 1984. It connects the European inland waterways and ports to the Constanta harbor, which is also known as the eastern Euro Port.

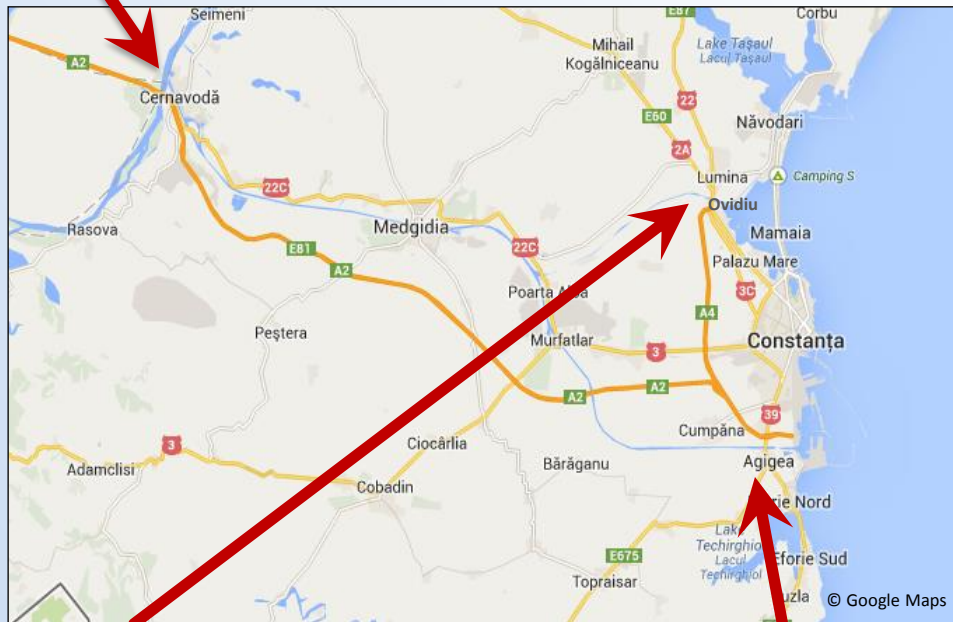
The project is supposed to be realized in 54 month without interruption of the navigation on the channel.





CERNAVODA LOCK

- Useful length: 310,0 m
- Width: 25,0 m
- Depth on sill: 7,5 m

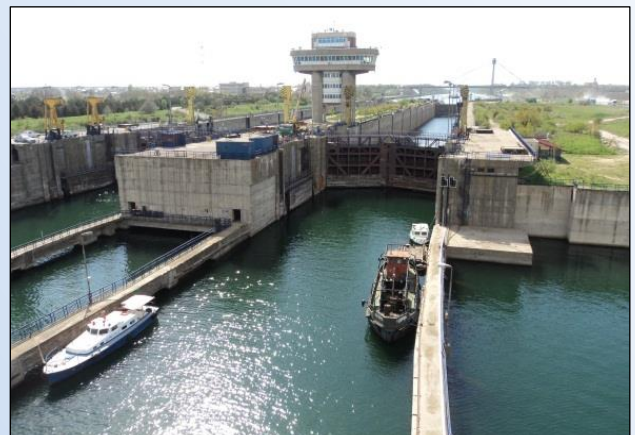


OVIDIU LOCK

AGIGEA LOCK



- Total Length: 145,00 m
- Width: 12,50 m
- Depth on Sill: 4,25 m



- Total Length: 310,00 m
- Width: 25,00 m
- Depth on sill: 7,50 m